

ahn myLab[®]

Refrigerated Centrifuge 15000 RPM RC-01

Usage - the centrifuge is design to separate, sediment, spin down aqueous solutions and solvent suspensions of different sensity

Intuitive control panel - a large, easy-to-use digital display with its bright back-lit LCD panel provides a quick way to view and adjust key operational settings / neatly arranged one-touch buttons surround the display and make it easy to adjust spin speed and time

Excellent thermal control - ultra-low temperature settings can cool the rotor chamber down to -20°C with minimum temperature fluctuation ($\pm 4^\circ\text{C}$) even at high speeds / a preset quick-cooling mode lowers the temperature of the rotor chamber to 4°C below ambient in a short time

Brushless DC motor - fine-tuned brushless DC motor provides silent operation at top-notch spin speeds of up to 15000 RPM / the brushless design lowers maintenance costs and gives long lasting performance

Stable operation - rubber feet and the high-tech motor minimise vibrations during centrifugation, keeping the centrifuge stable on the workbench at all times

Universal rotor options - 44-place (22388 x g) and 24-place (21420 x g) rotor options accommodating 1.5 mL and 2 mL microcentrifuge tubes / further options are an 8-place (18462 x g) rotor for larger 5 mL microcentrifuge tubes and a special PCR strip rotor (15397 x g)

Select your rotor on the next page

Excellent safety features - lid-lock safety mechanism prevents access to the rotor whilst spinning. Screw-on rotor lids keep tubes safely anchored in the rotor / a curved body reduces the incidence of injury when users accidentally bump into the centrifuge

Imbalance detection - electronic imbalance detection feature automatically detects load imbalances to protect the rotor and motor

Microprocessor control - electronically controlled features provide unparalleled performance and allow user defined spinning programs

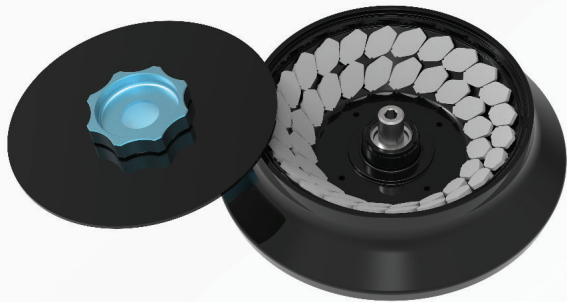


Specifications	
Motor Typ	Brushless DC
Temperature Range	-20°C to 40°C
Speed	500 to 15000 RPM / 22388 x g (max. RCF)
Speed accuracy	± 100 RPM
Time Settings	30 sec. – 999 min. or infinite
Display	Large Back Lit LCD
Programmable Feature	Up to 99 user-defined programs of 4 lines each
Lid Lock Safety Feature	Yes
Imbalance Detection	Yes
Dimensions (WxDxH)	325x720x305 mm
Weight	43 kg

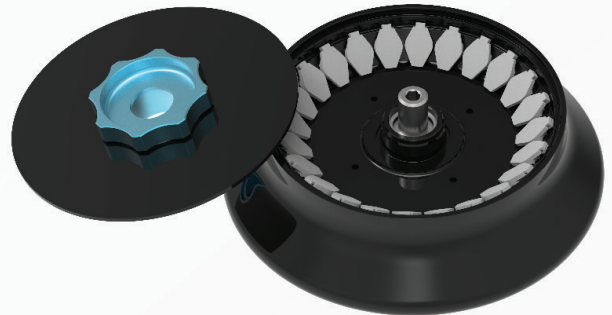


CR-15-44

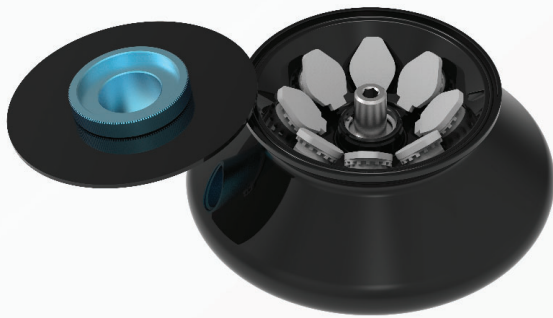
Fix angle rotor for 44x 1.5 mL/ 2.0 mL MT, 22388 x g

**CR-15-24**

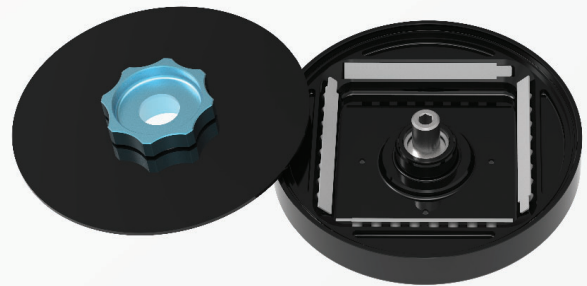
Fix angle rotor for 24x 1.5 mL/ 2.0 mL MT, 21420 x g

**CR-15-8**

Fix angle rotor for 8x 5.0 mL MT, 18462 x g

**CR-15-4**

Fix angle rotor for 4 strips of 8x 0.2 mL/ 0.5 mL PCR tubes, 15397 x g



Ordering information

Description	Cat. No.	Delivery Package
myLab® RC-01 Refrigerated Centrifuge (without rotor)	7-040-00-0	1 pc. Refrigerated Centrifuge (without rotor)
Optional Attachments	Cat. No.	Adaptors for 0.4/0.5 mL tubes
Fix angle rotor for 44x 1.5 mL/ 2.0 mL MT, 22388 x g	CR-15-44	Adaptors for 0.1/0.2 mL tubes
Fix angle rotor for 24x 1.5 mL/ 2.0 mL MT, 21420xg	CR-15-24	1 pc. T-Allen key
Fix angle rotor for 8x 5.0 mL MT, 18462 x g	CR-15-8	1 pc. Power cord
Fix angle rotor for 4 strips of 8x 0.2 mL/ 0.5 mL PCR tubes, 15397 x g	CR-15-4	1 pc. Grease tube
		1 pc. Instruction manual
		1 pc. Warranty card

Important note: Each rotor has a range of optional tube adaptors. Please contact contact@ahn-bio.com to get the full overview of all adaptors that are available.